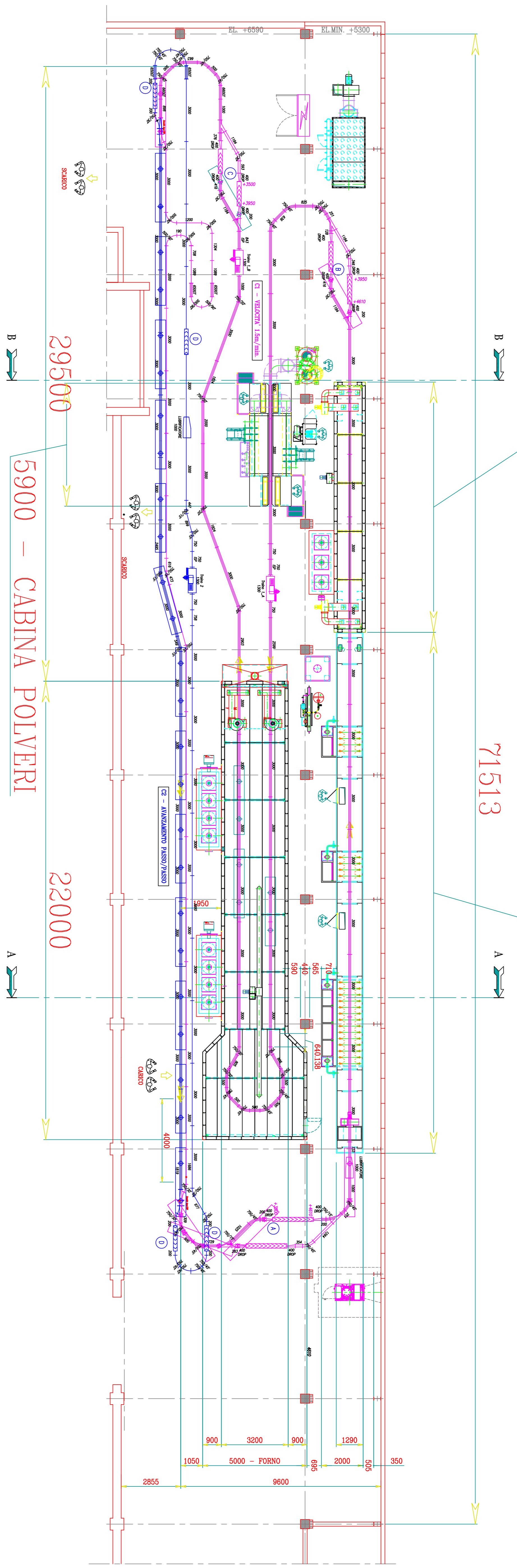


12008 - FORNO ASCIUGATURA

25000 - TUNNEL DI PRE-TRATTAMENTO



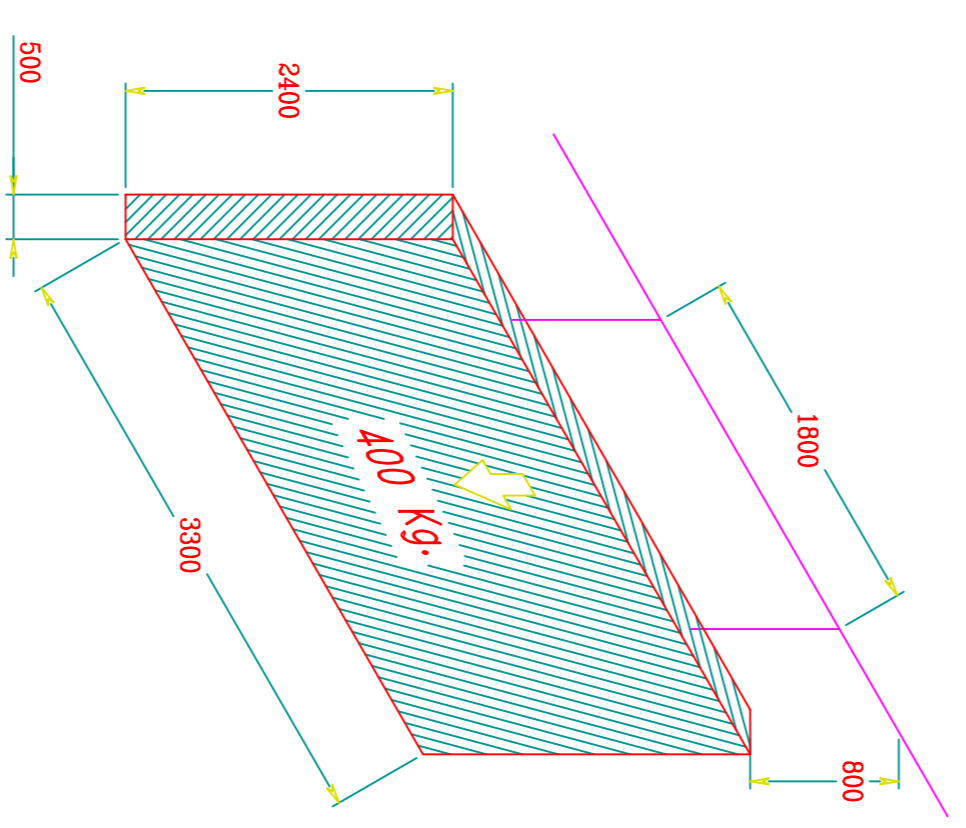
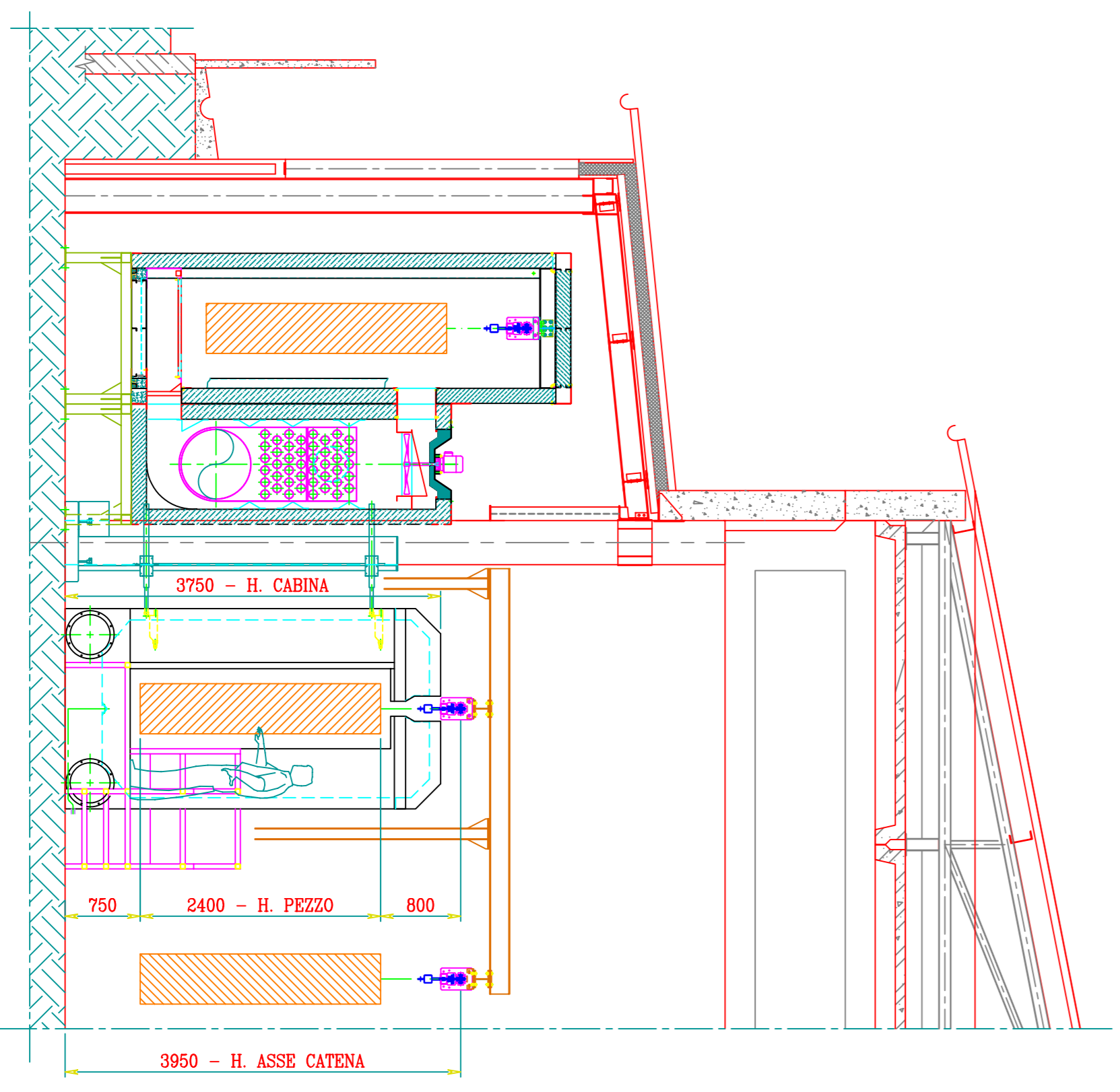
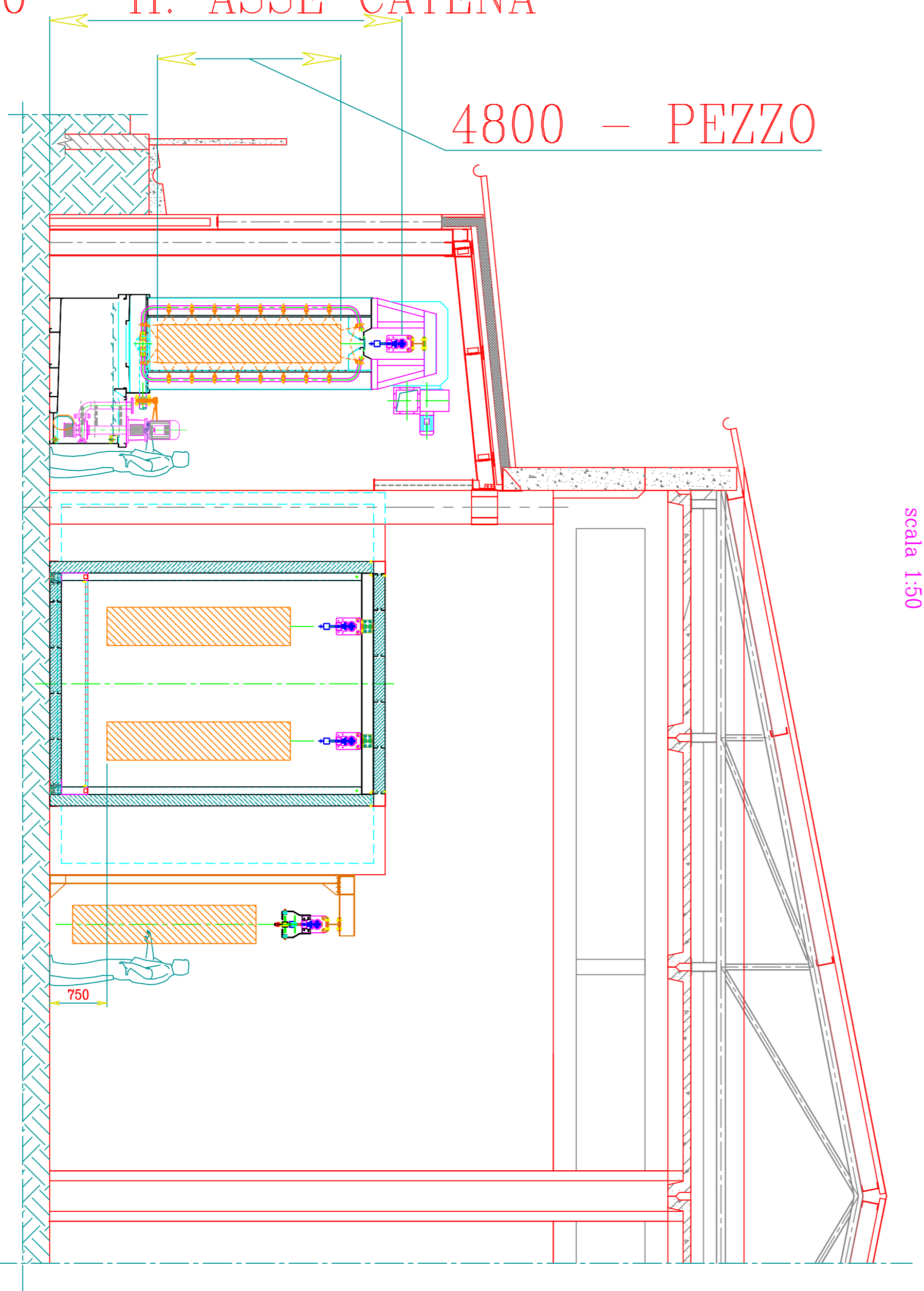
LAY-OUT GENERALE

SEZIONE "A-A"
scala 1:50

SEZIONE "B-B"
scala 1:50

9220 - H. ASSE CATENA

4800 - PEZZO



DATI TECNICI IMPIANTO POLVERI:

TIPO DI TRASPORTATORE	BIROTALA DR33
AVANZAMENTO	IN CONTINUO V = 1.5 mt./min 50 Hz
PASSO BILANCELLE	4000 mm
PRODUZIONE	23 bt/h.
DIMENSIONI MAX. BILANCELLA	500 x 3300 x h.2400
CARICO MAX. PRR APPENSIONE	400 kg.